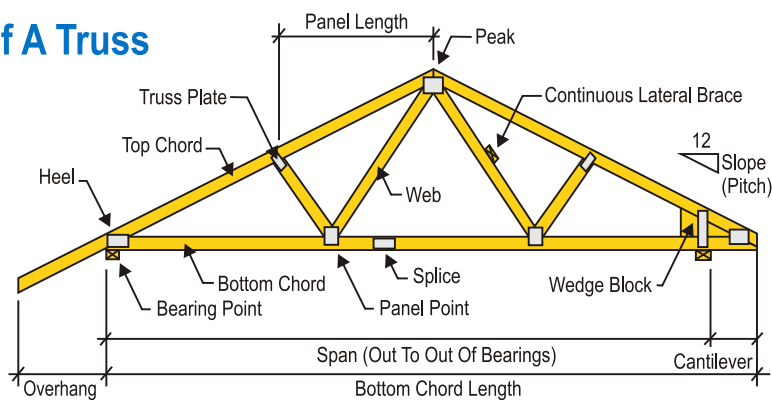
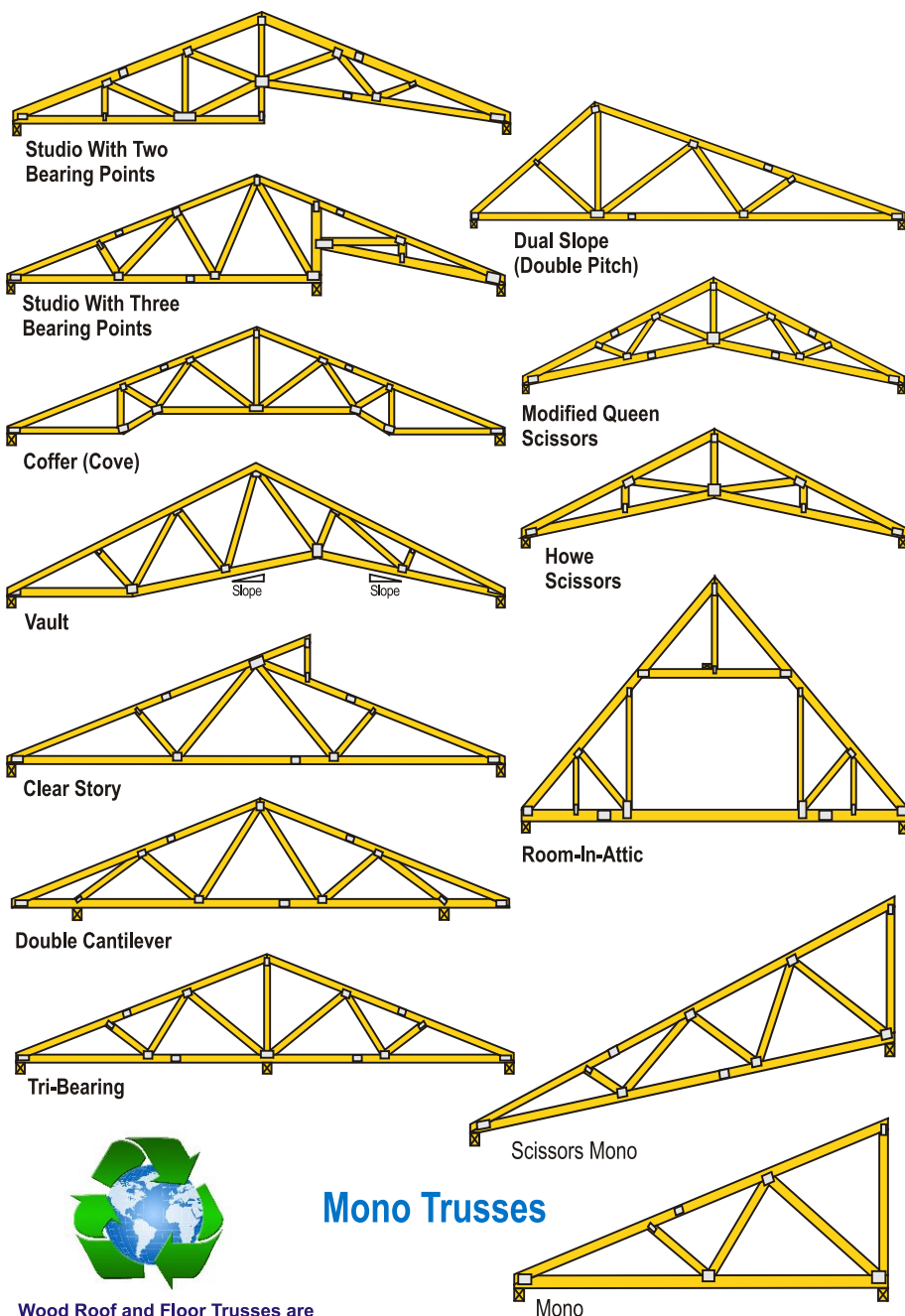


# Typical Wood Truss Configurations

## Parts Of A Truss



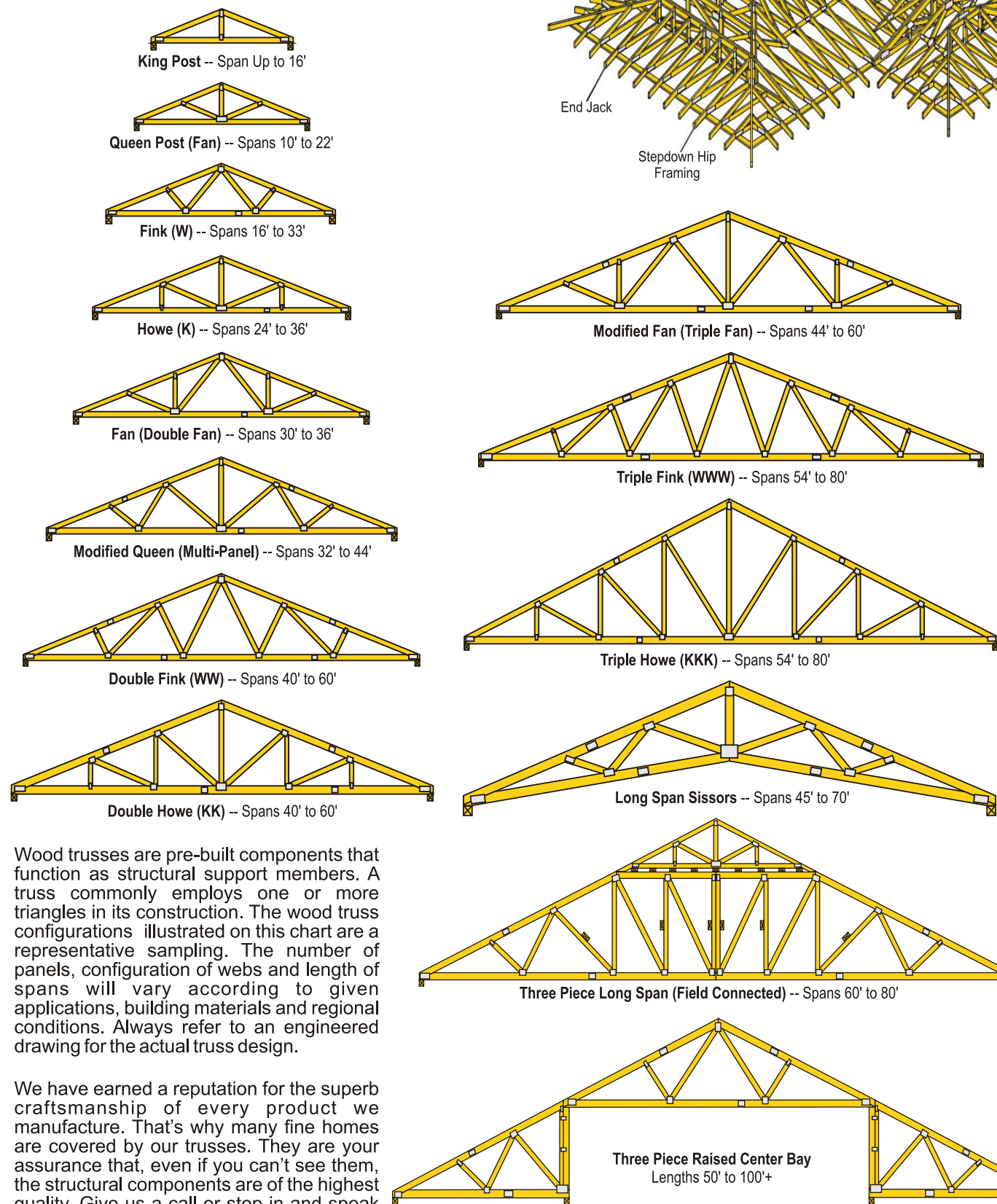
## Typical Triangular Trusses



## Mono Trusses

Wood Roof and Floor Trusses are Environmentally Compatible.

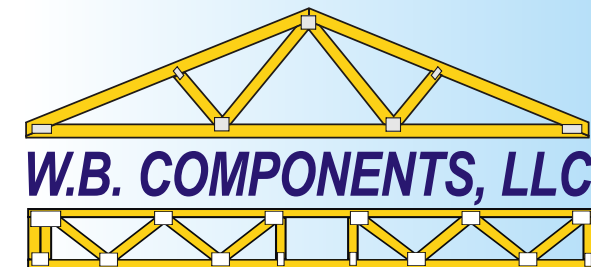
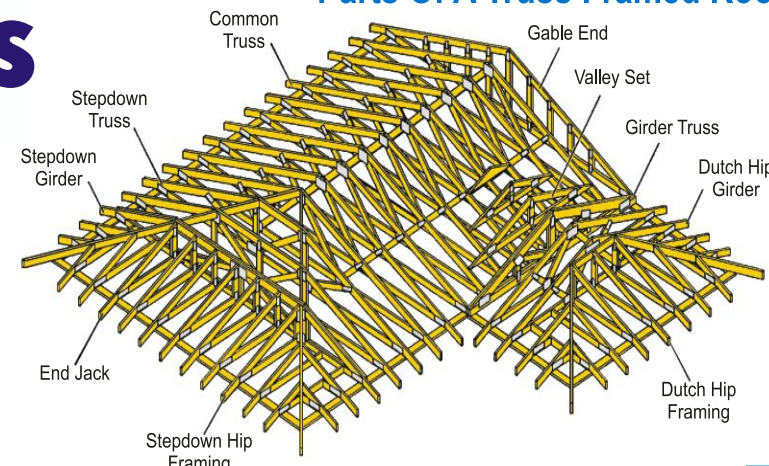
## Common Trusses & Their Spans



Wood trusses are pre-built components that function as structural support members. A truss commonly employs one or more triangles in its construction. The wood truss configurations illustrated on this chart are a representative sampling. The number of panels, configuration of webs and length of spans will vary according to given applications, building materials and regional conditions. Always refer to an engineered drawing for the actual truss design.

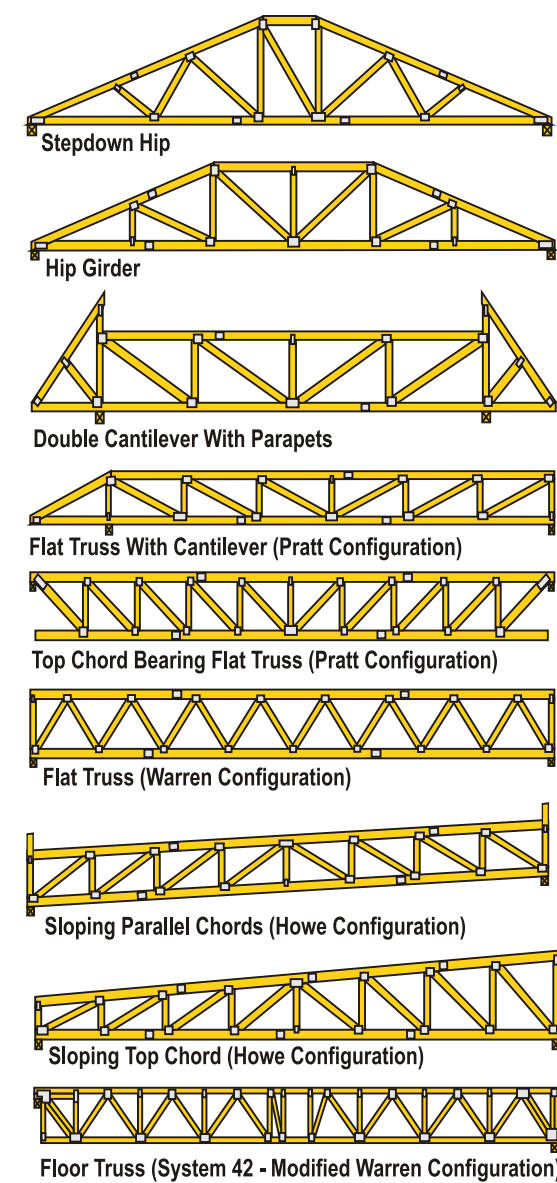
We have earned a reputation for the superb craftsmanship of every product we manufacture. That's why many fine homes are covered by our trusses. They are your assurance that, even if you can't see them, the structural components are of the highest quality. Give us a call or stop in and speak with one of our experienced truss designers. Let us help you with your construction projects!

## Parts Of A Truss Framed Roof



**WB Components, LLC**  
 8826 76th Street SE  
 Edgeley, North Dakota 58433  
 Phone: (701) 493-2046  
 Fax: (701) 493-2945

## Typical Flat & Parallel Chord Trusses



**Note of Caution:** Large Long Span Trusses require special handling and erection specifications. The installation of wood trusses requires the same high degree of safety awareness as the installation of any other structural material. Spans over 60' may require complex permanent bracing. Please ask your sales representative for more information.